
User manual of Direct Thermal Barcode Printer

Brand: SoonMark

Model: M8

Paper size: 100mm x 150mm

CONTENT

Instructions:

Clicking at each topic below will bring you to the page directly.

A) Equipment checklist	3
B) Printer parts	5
C) Printer setting	6
D) Download & save the driver file	7
E) Installation	8
F) Size setting	13
G) Printing the eAWB	15

A) Equipment checklist

- 1) Adapter + Power Jack Adapter
- 2) USB Printer Cable
- 3) Operation Manual
- 4) Driver Disk
- 5) Power Cord

2) USB Printer Cable

1) Adapter + Power Jack Adapter

3) Operation Manual

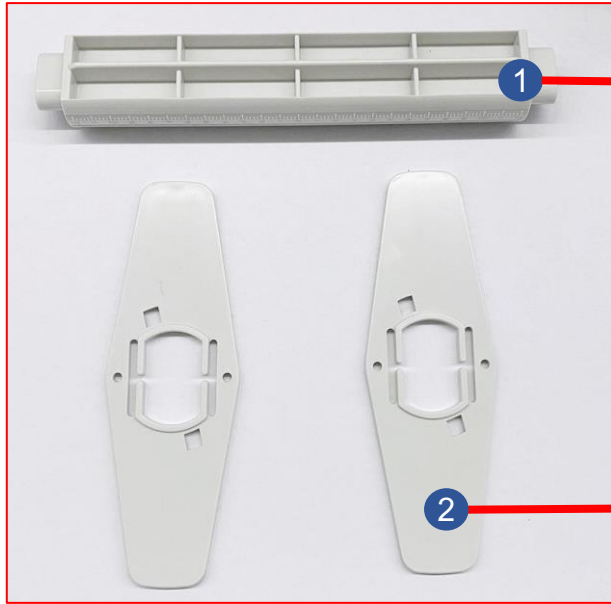


5) Power Cord

4) Driver Disk

A) Equipment checklist

Insert the label roll using the 'Roll Mount'.



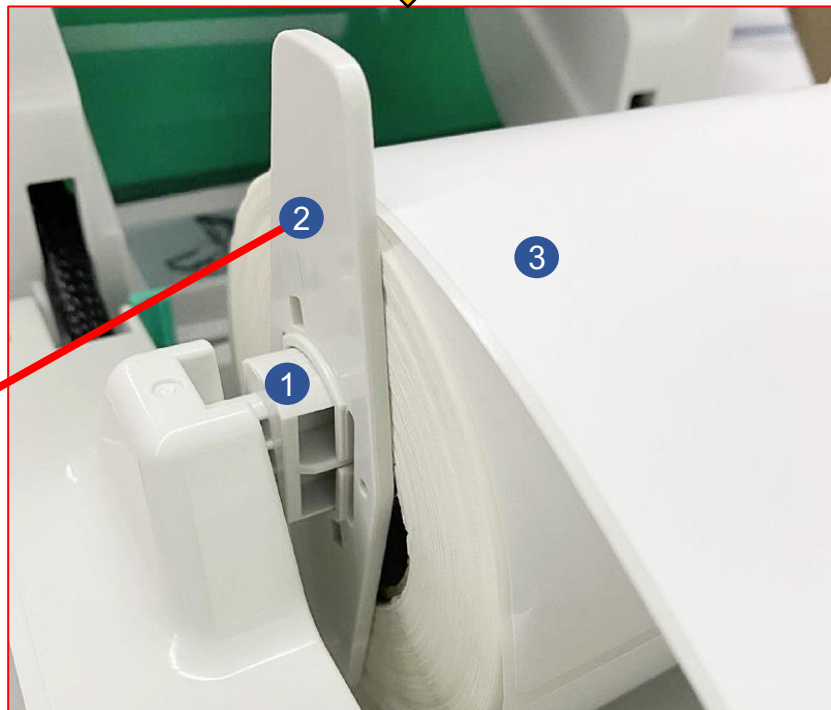
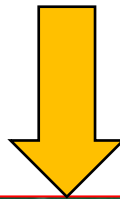
Label Spindle

Core Adapter



Label Roll

Roll Mount



Core Adapter will be placed at both sides to secure the label roll while printing.

B) Printer parts

Front surface

Clear Window
is to view the label roll inside the printer.



Feed Button
is used for the calibration process.

The Open button for the Top Cover

Back surface



Power Switch
I - On
O - Off

SD Card Slot

USB Printer Port

Power Jack Adapter Slot

C) Printer setting

Step 1

Please connect the **'USB'** to the PC/Laptop and plugin the **'Power Cord'** into the socket.



Step 2

The **'USB Printer Cable'** and **'Power Jack Adapter'** need to connect with the printer. Then, turn on the switch button, and it will beep once.



USB Printer Cable

Power Jack Adapter

D) Download & save the driver file

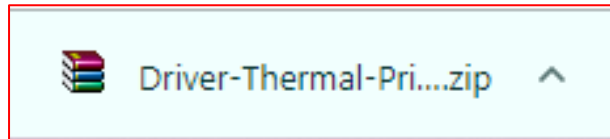
Step 1

Click here: www.skynet.com.my/labelprinter and select the 'Driver' as shown.



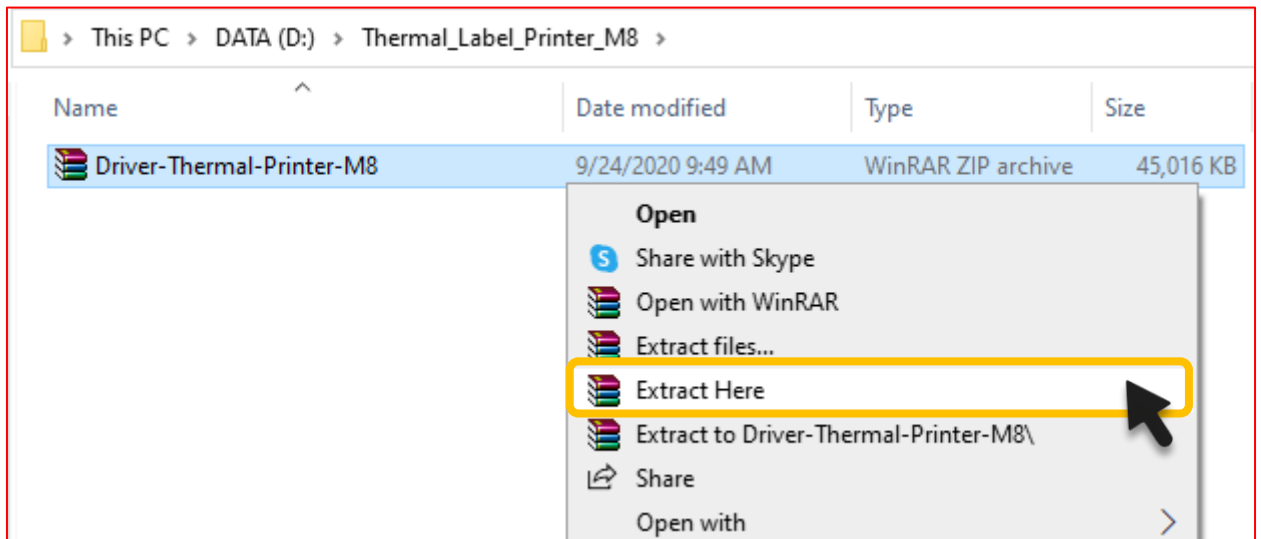
Step 2

This driver will download as a zip file. Kindly save this zip file at any folder inside your PC/Laptop.



Step 3

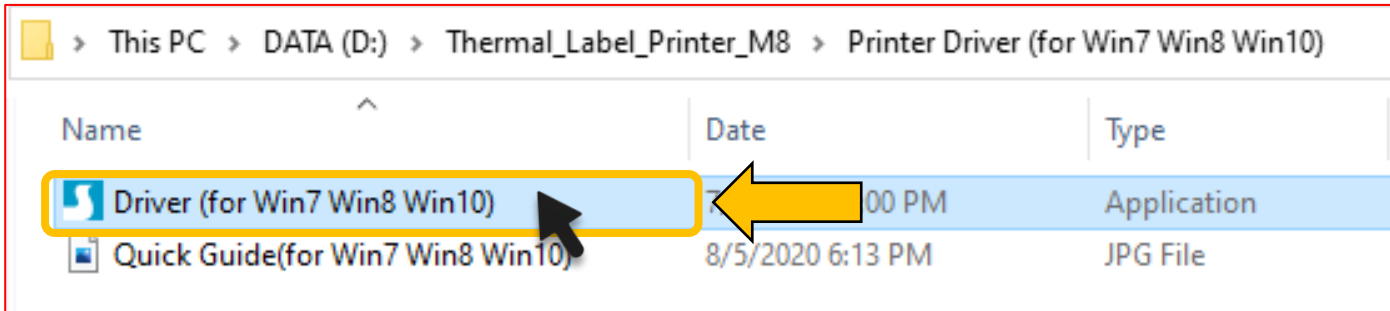
To unzip the file, right-click at the zip file and choose 'Extract Here'.



E) Installation

Step 1

After unzipping the file, double click at **'Driver (for Win7 Win8 Win10)'** to install the printer driver.



Step 2

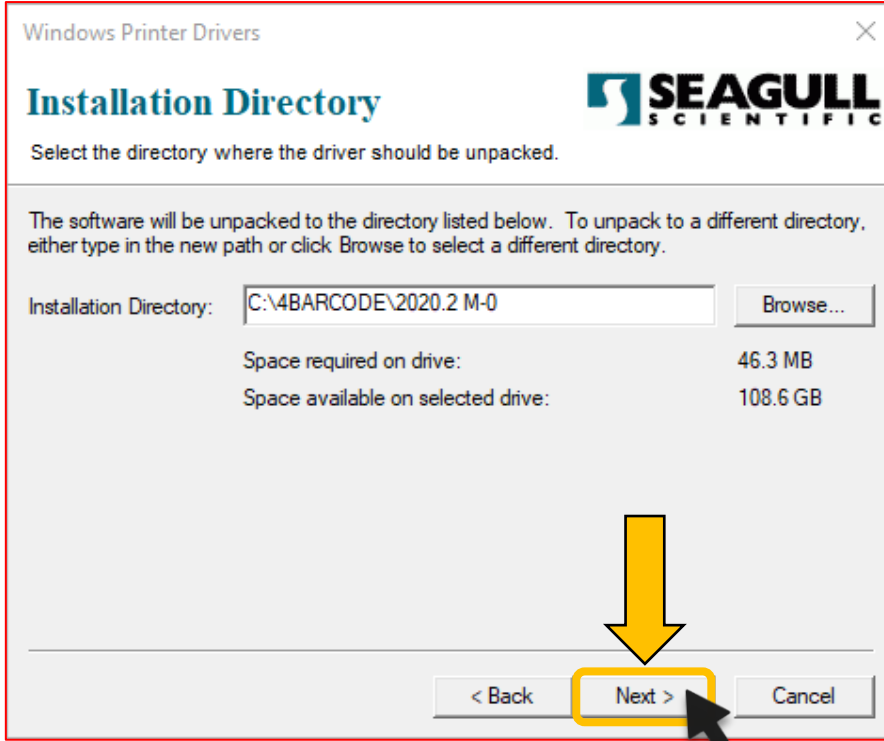
Kindly tick *'I accept the terms in the license agreement'* and click on the **'Next'** button.



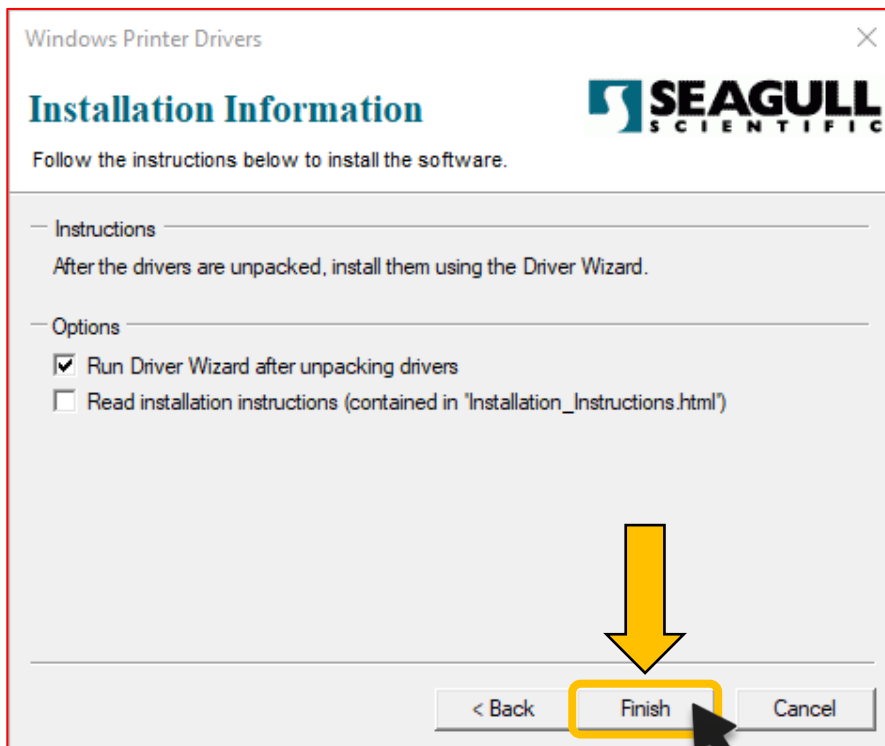
E) Installation

Step 3

Click the **'Next'** button.



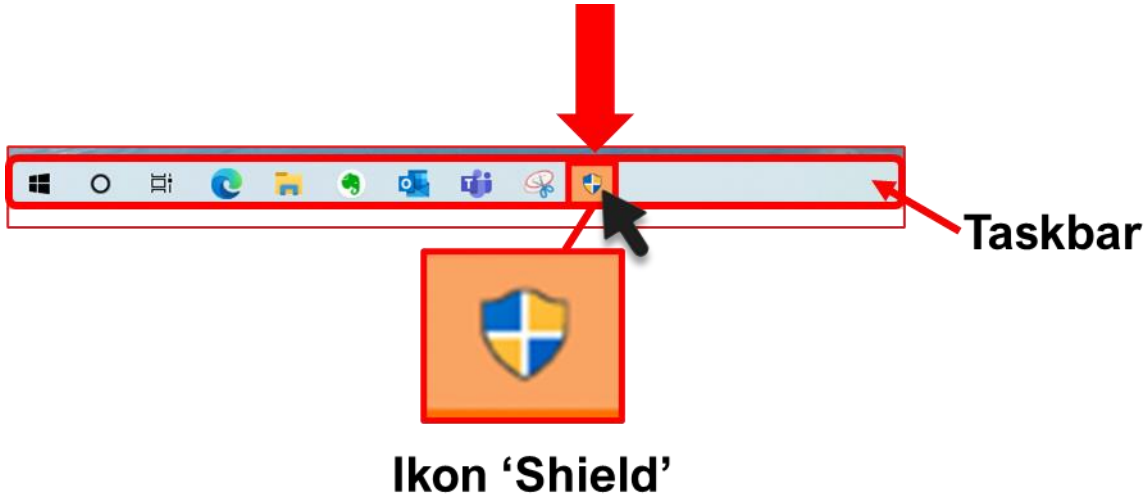
Then, click at the **'Finish'** button.



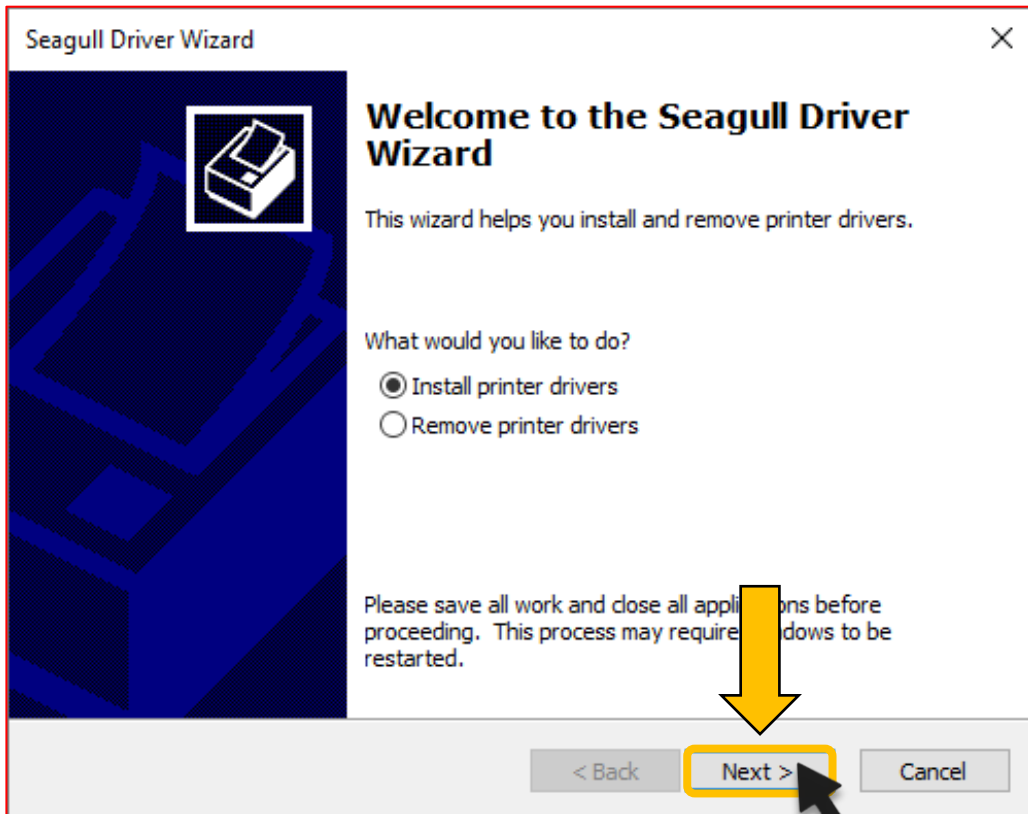
E) Installation

Step 4

This **'Shield icon'** will blink at the PC/Laptop taskbar. Kindly click at the icon to continue the installation.



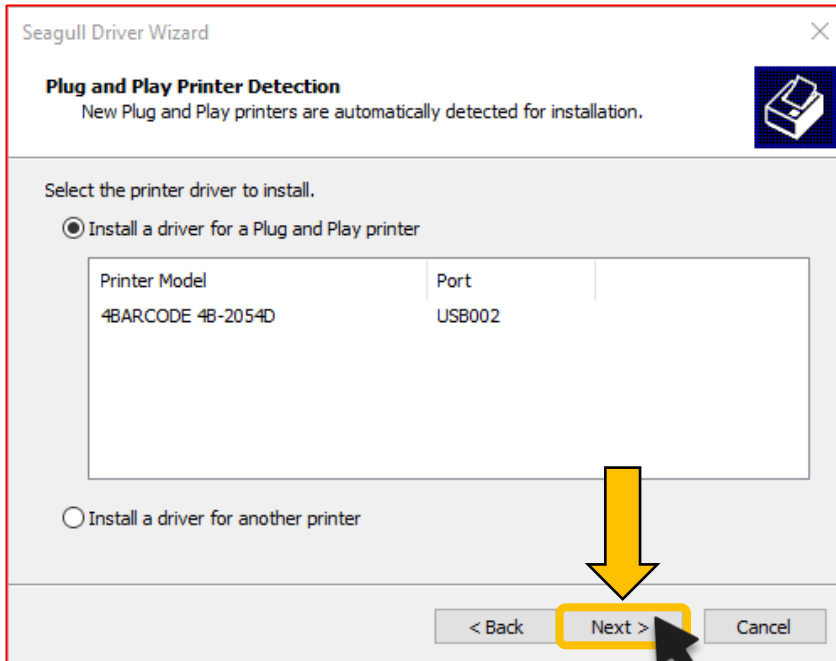
Then, click on the **'Next'** button.



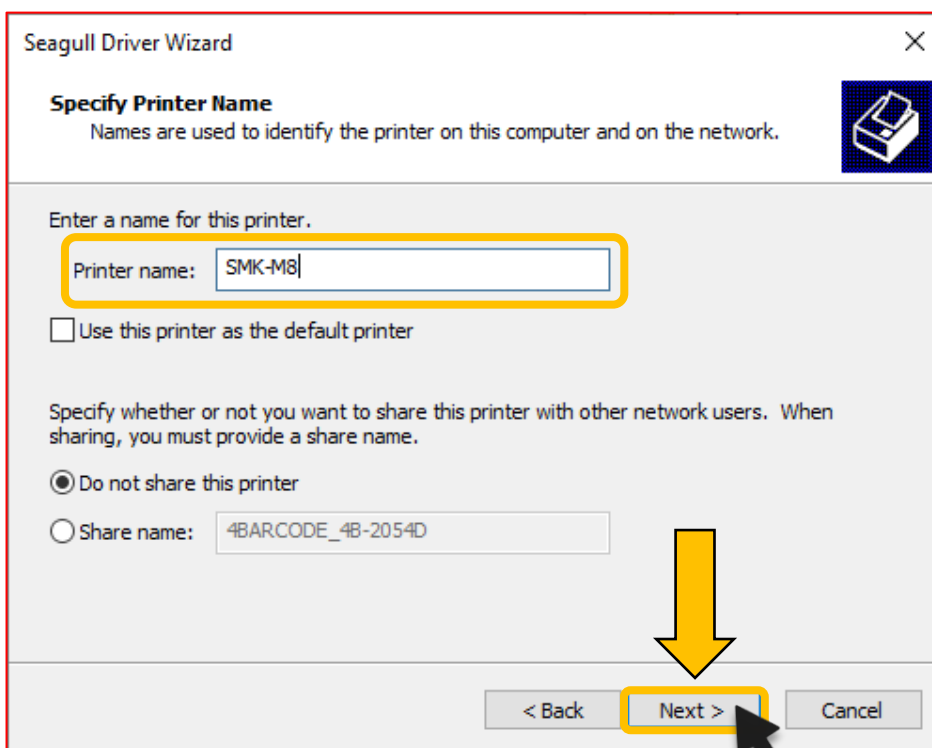
E) Installation

Step 5

Click on the **'Next'** button.



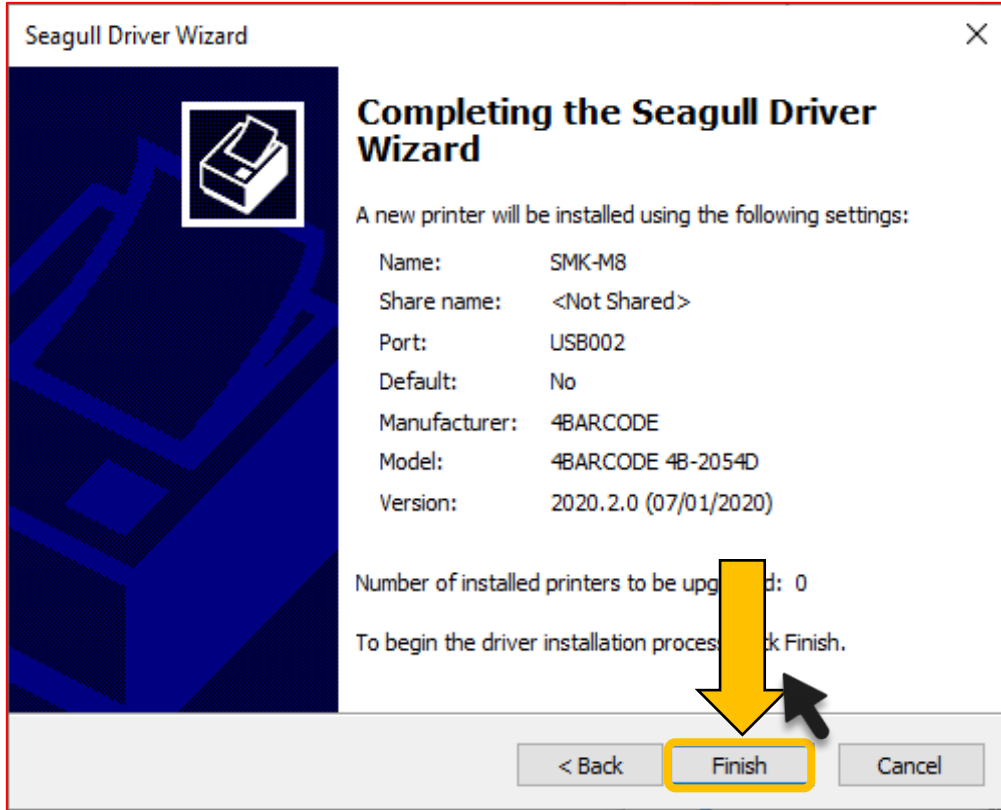
- Use the default name or rename the file for easier reference.
- Rename the Printer as **'SMK-M8'**.
 - SMK referring to SoonMark.
 - M8 referring the Model's name.
- Once done, click on the **'Next'** button.



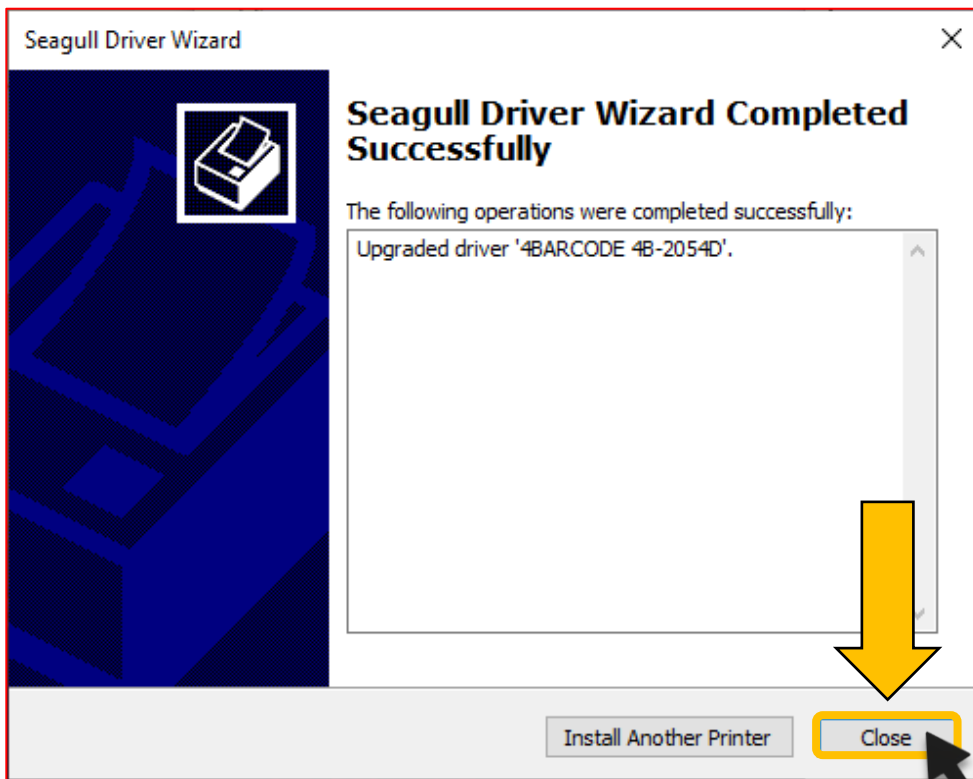
E) Installation

Step 6

Click on the **'Finish'** button.



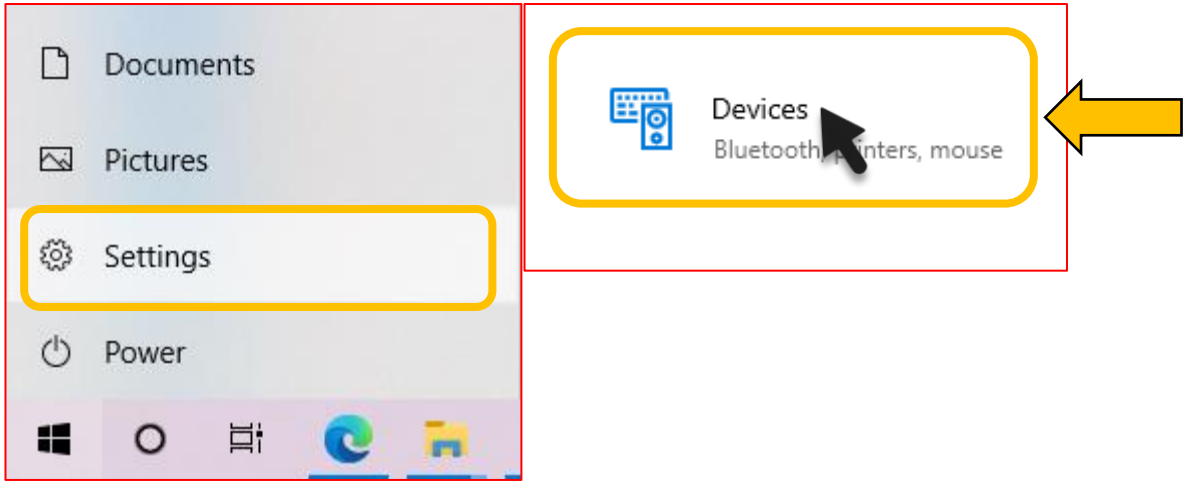
The driver has been installed successfully! Click **'Close'**.



F) Size setting

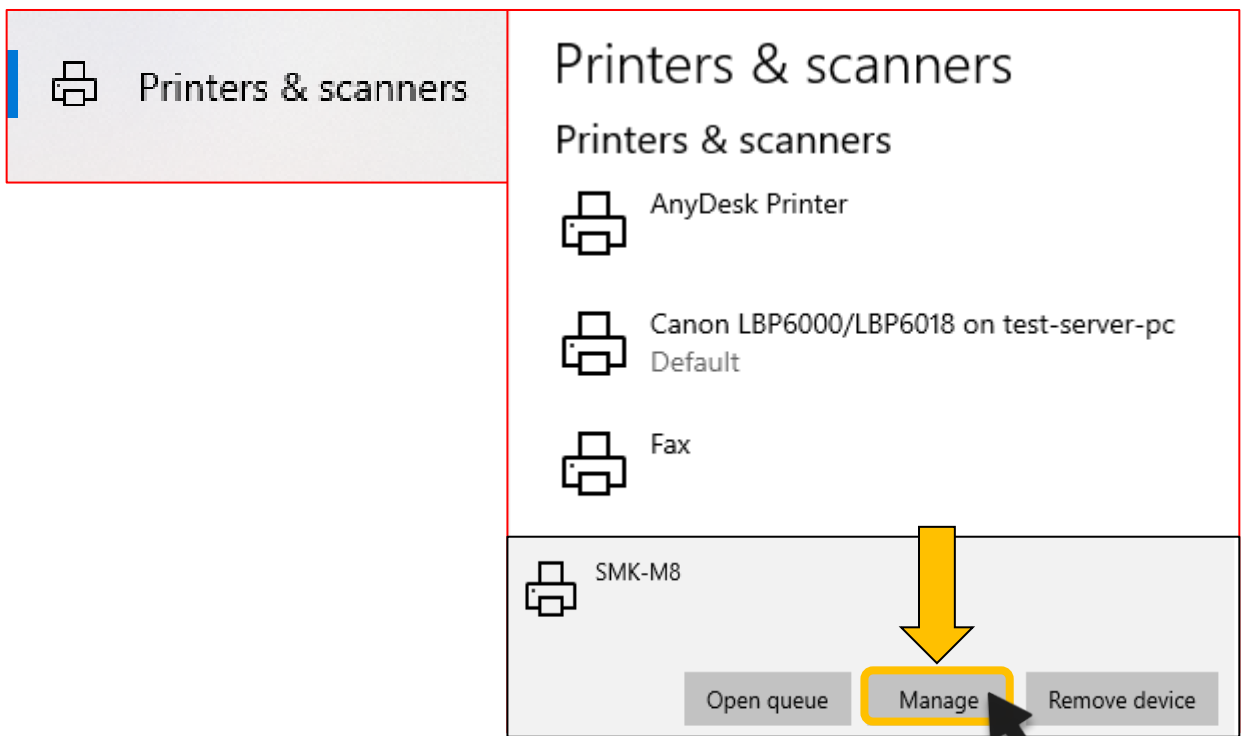
Step 1

Go to the Windows **'Setting'** and click on the **'Devices'**.



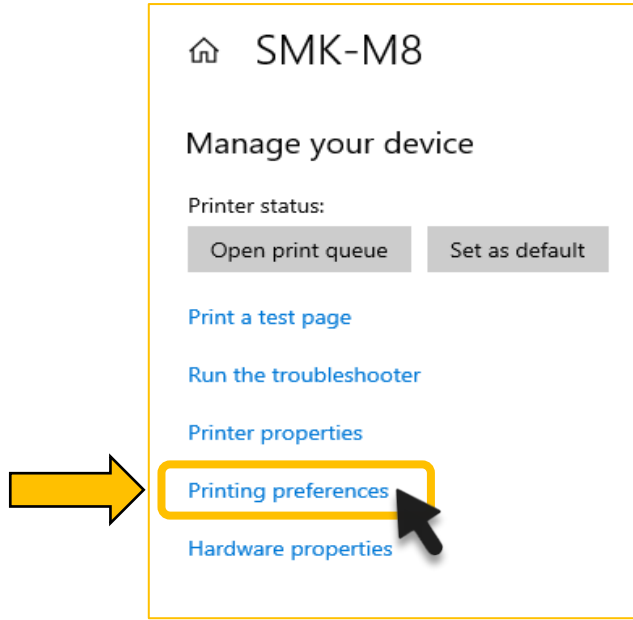
Step 2

- Click at the **'Printer & Scanners'**.
- Select the printer that has already been renamed as **'SMK-M8'**.
- Click on the **'Manage'** button.



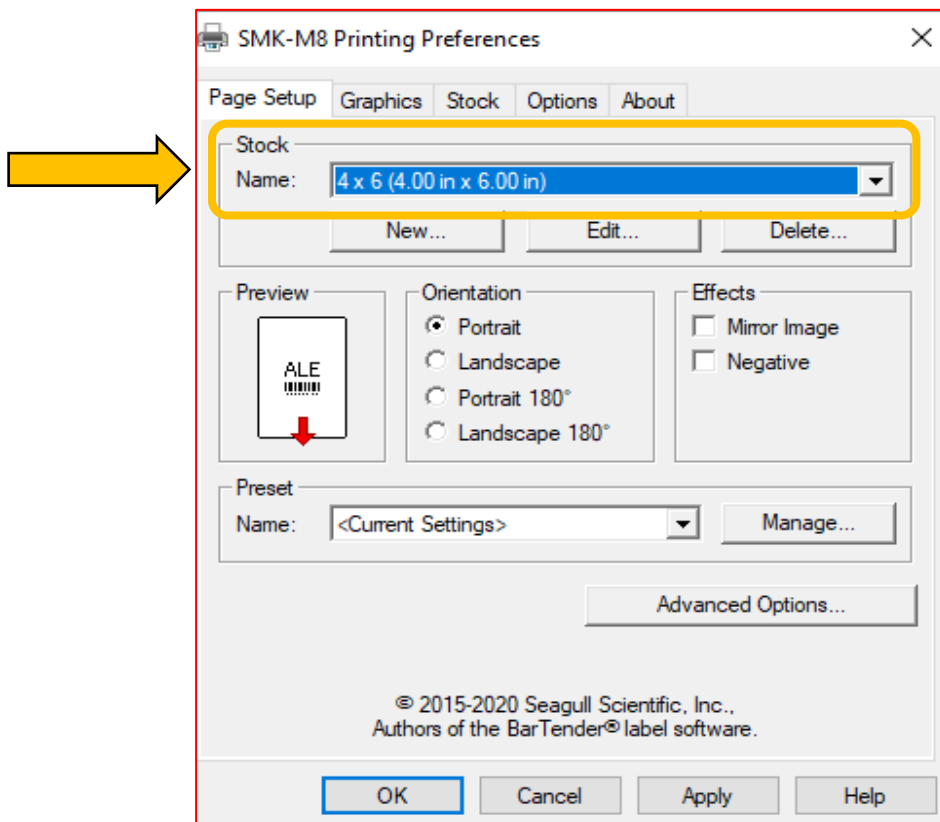
Step 3

Click at the 'Printing preferences'.



Step 4

- Select the size '4 x 6' (4.00 in x 6.00 in) for the A6 sticker.
- Click on the 'Apply' button to apply the changes and then click 'OK'.

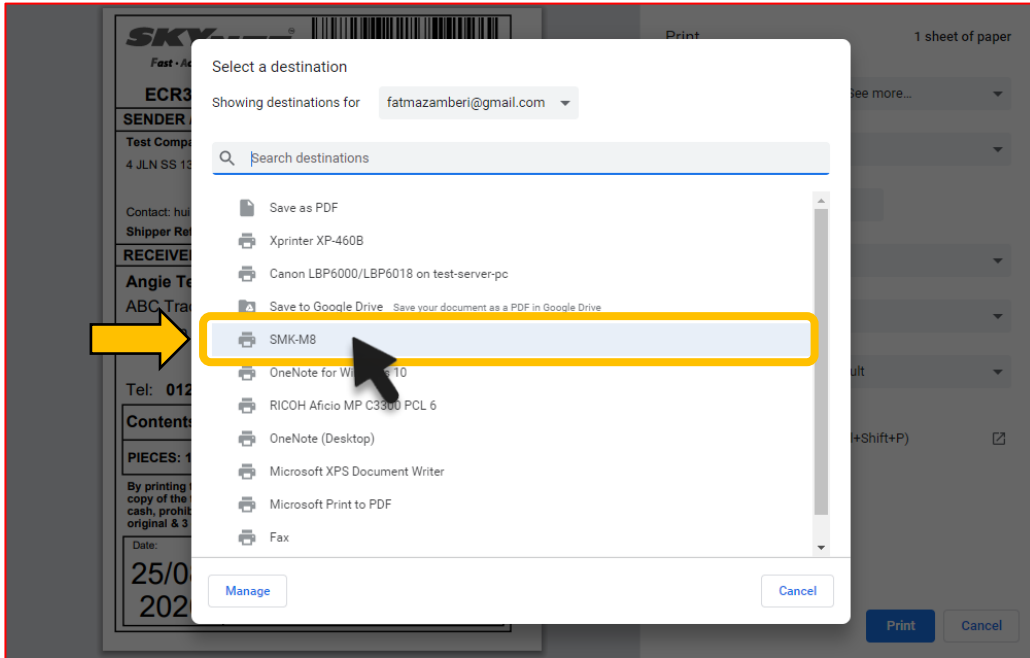


G) Print eAWB

Once everything is completed, the printer is to be used. The last process is to print your eAWB.

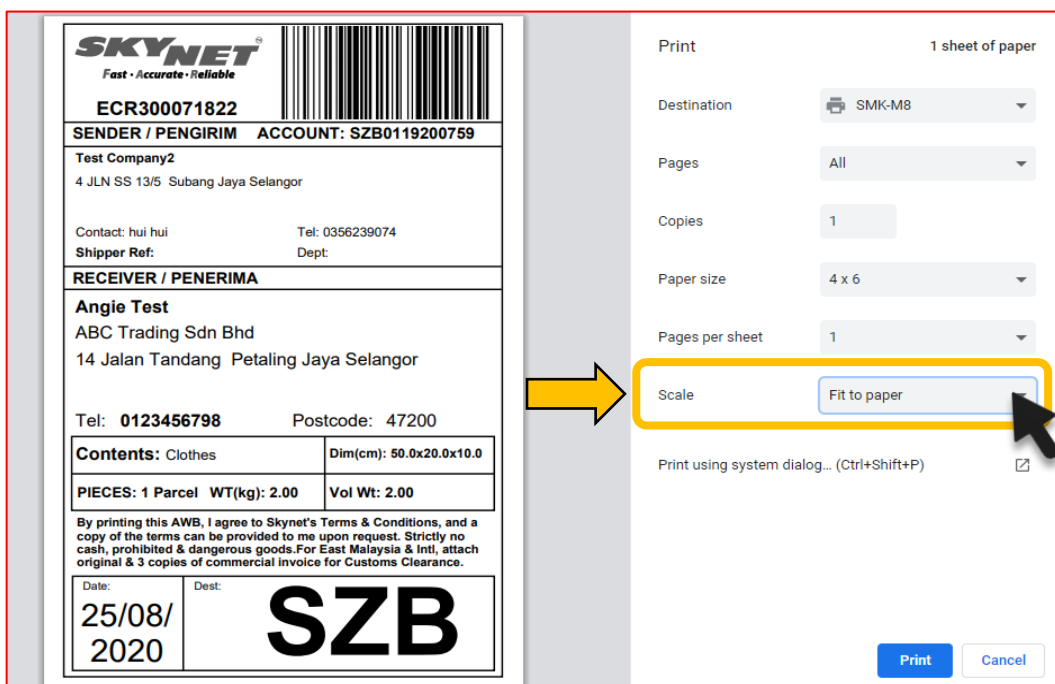
Step 1

Select the 'SMK-M8' printer.



Step 2

Select 'Fit to Paper' for 'Scale' and click 'Print'.



Thank You
