
User manual of Direct Thermal Barcode Printer

Brand: XPRINTER

Model: XP-460B

Paper size: 100mm x 150mm

CONTENT

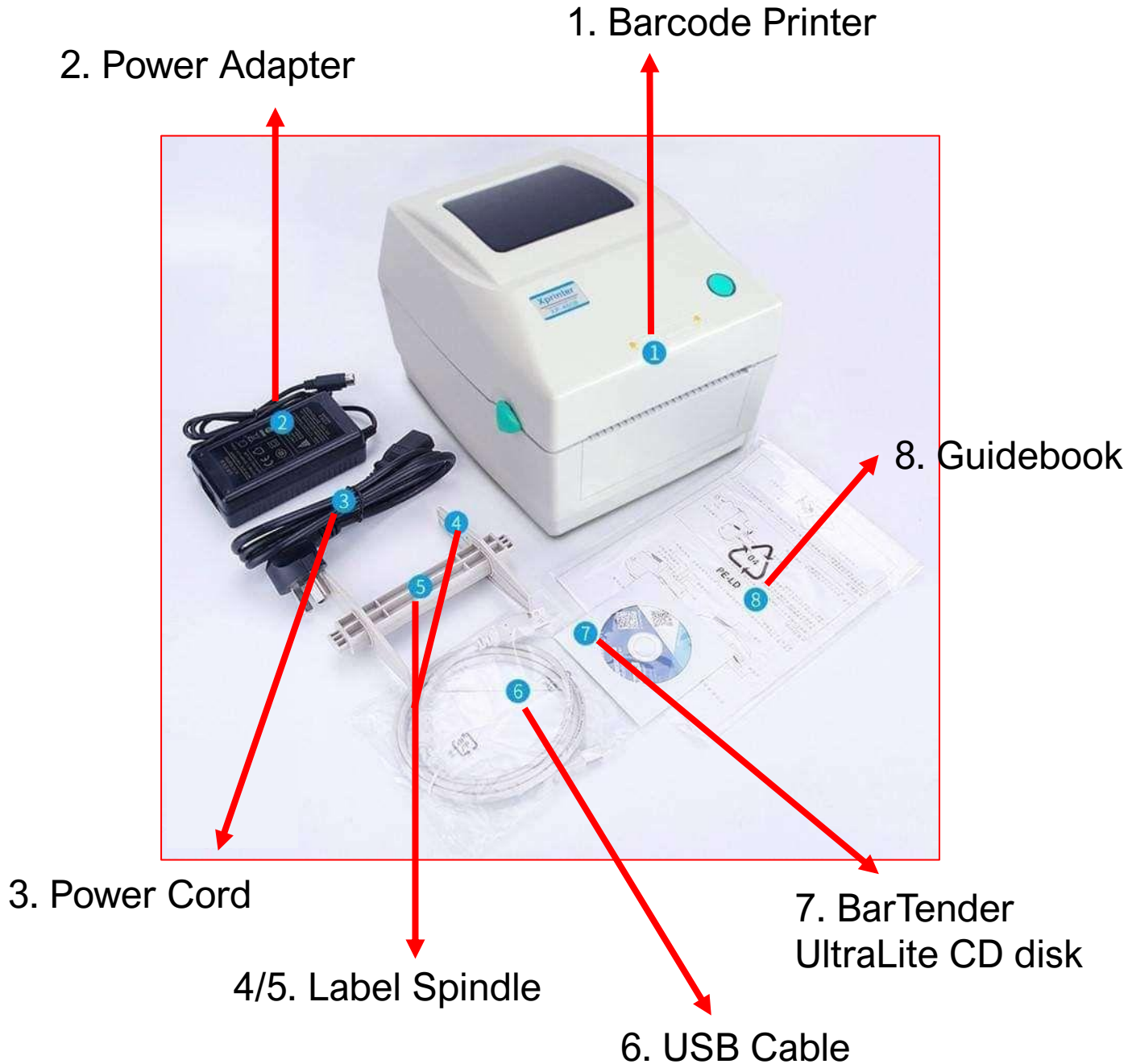
Instructions:

Clicking at each topic below will bring you to the page directly.

A) Equipment checklist	3
B) Printer parts	5
C) Download & save the driver file	6
D) Printer setting	7
E) Installation	10
F) Size setting	15

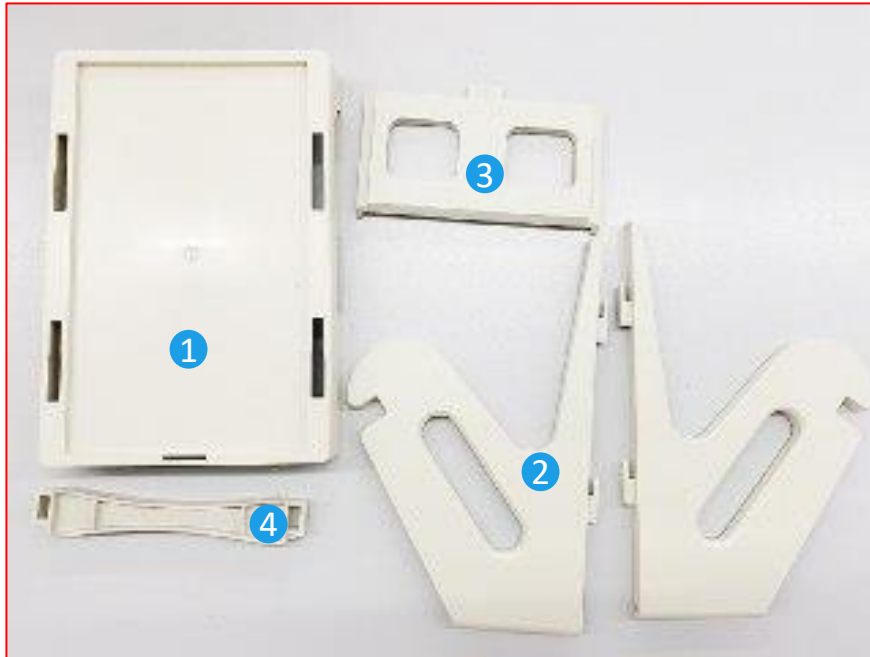
A) Equipment checklist

The equipment provided in the box.

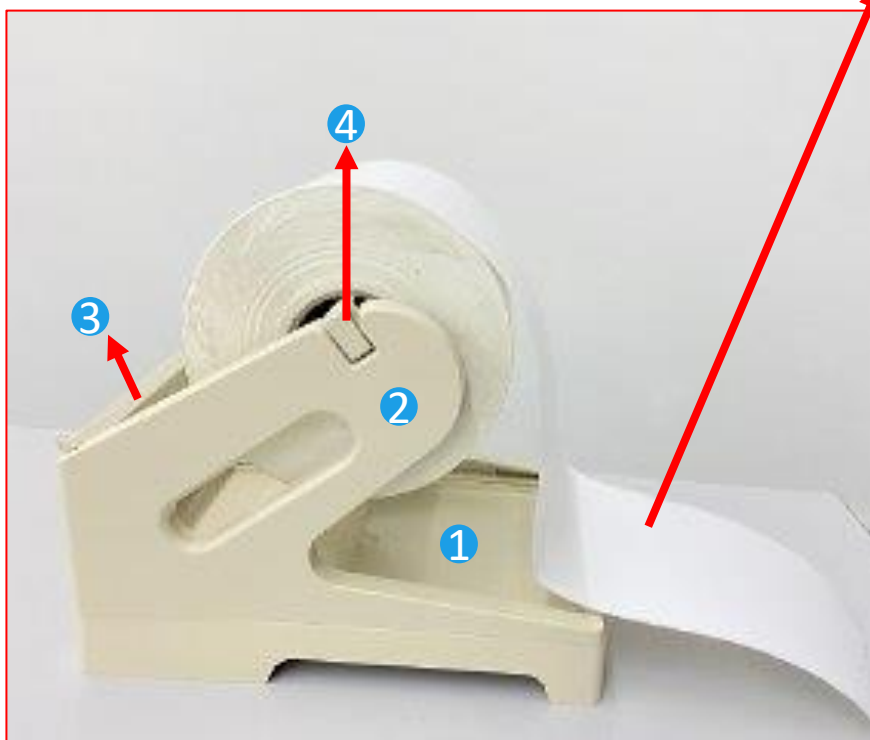


A) Equipment checklist

External Roll Mount



The new sticker/label should face up after assembling the roll mount.



B) Printer parts

Below is the printer descriptions.

Front surface

Clear Window

Feed Button
with
LED Indicator
Light



Top Cover
Open Lever

Back surface

Label Tray
(Insert new
label here
facing up).

Power
Switch

RS-232C
DB-9
Interface



SD Card

Power Jack

USB Interface

C) Download & save the driver file

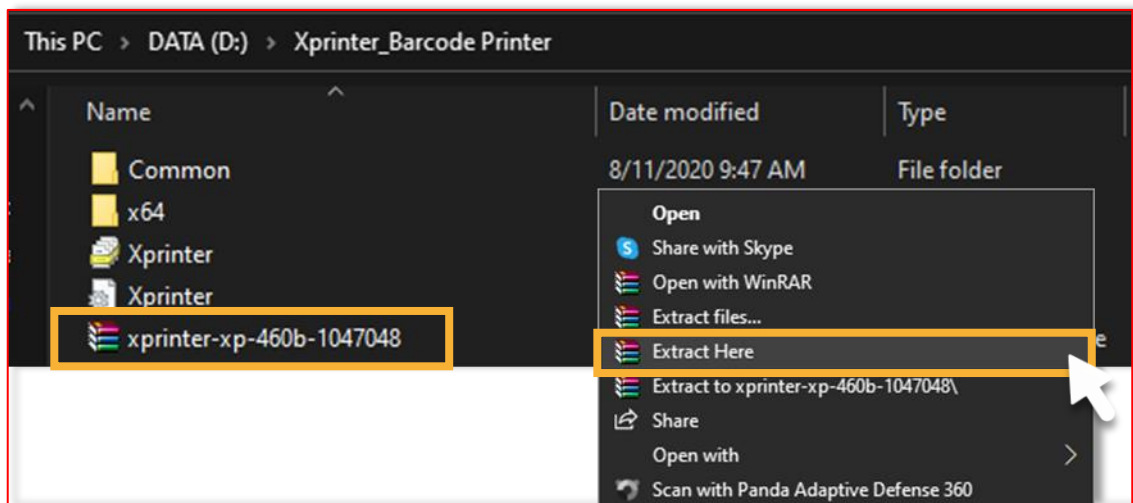
Step 1

From the link given, www.skynet.com.my/labelprinter select a model (X-Printer 460B) and download the **Driver**



Step 2

Once you already save the file inside the folder that you created. Right-click at that zip file and click **Extract Here** to extract the file.



D) Printer setting

Place the printer on a flat and secure surface.

Step 1

Plug in the **USB Cable** and **Power Adapter** to connect the printer to a computer. Then, turn on the **Power Switch** button.

The symbol meaning:

I - On

O - Off



Power Jack

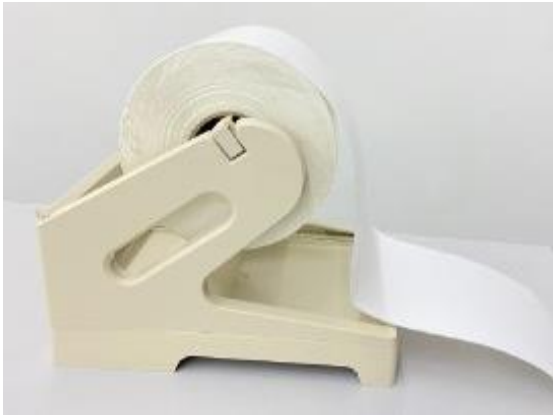
USB cable interface

Step 2

Press this feed button and the LED indicator light around this button will light up.



D) Printer setting



Step 3

Use external roll mount to insert the paper because the paper roll are tick.



Step 4

Insert the paper from the back of the printer.



Step 5

Hold both sides and push upward to open the top cover.



Step 6

Use the clips on both sides to secure the paper. Then, close the top cover.

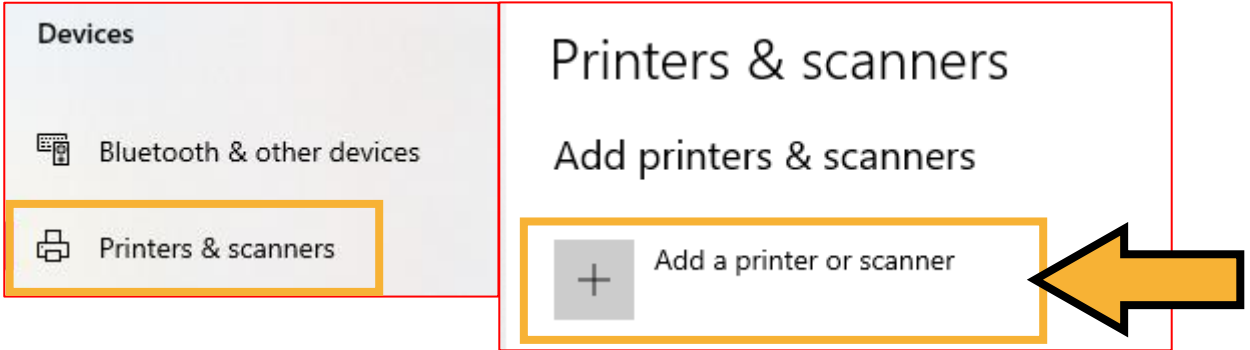
Secure clips

Sensor detector

E) Installation

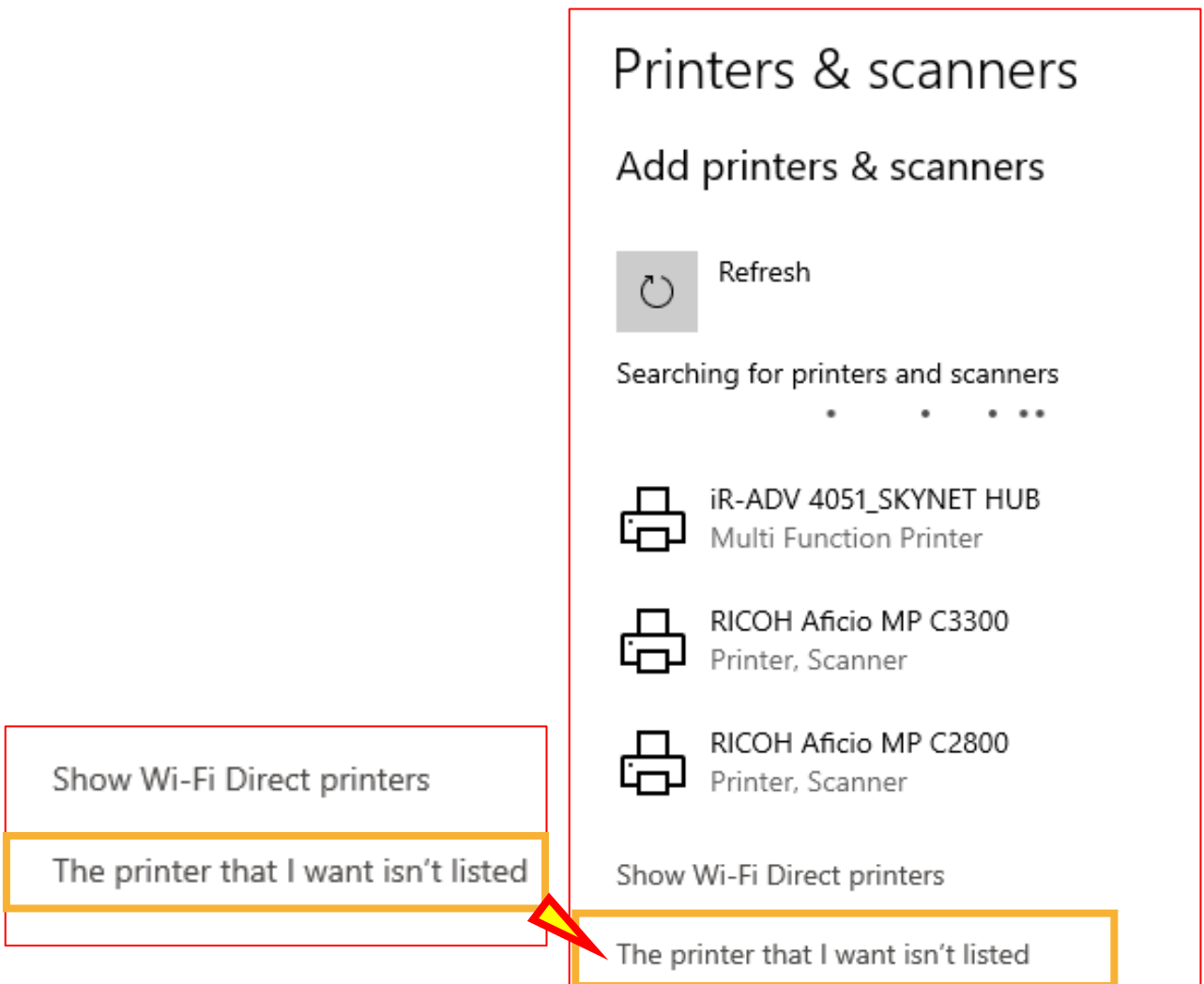
Step 1

Go to the **Setting** and under the **Devices**, click **Printer & Scanners**. Then, click **Add a Printer or Scanner**.



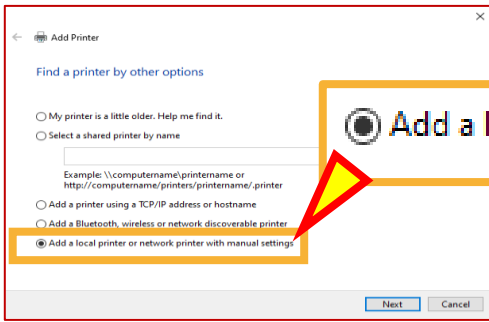
Step 2

After that, click at **'The printer that I want isn't listed'**.



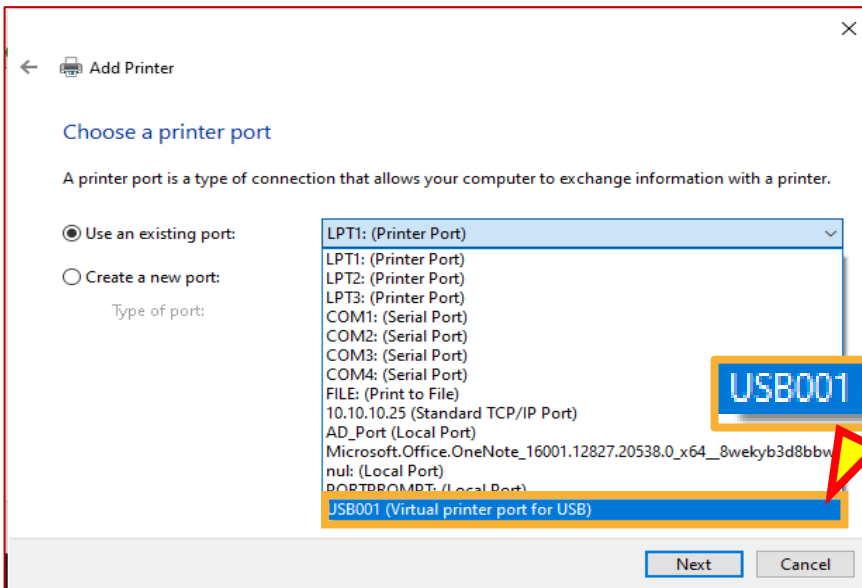
Step 3

Choose 'Add a local printer or network printer with manual settings'. Then, click **Next** button.



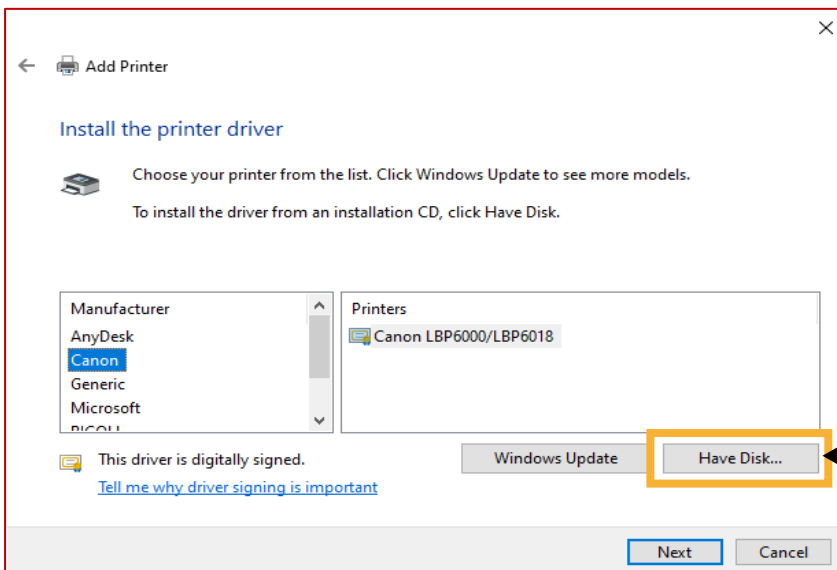
Step 4

Click 'Use an existing port' and choose 'USB001 (Virtual printer port for USB)'. Then click **Next** button.



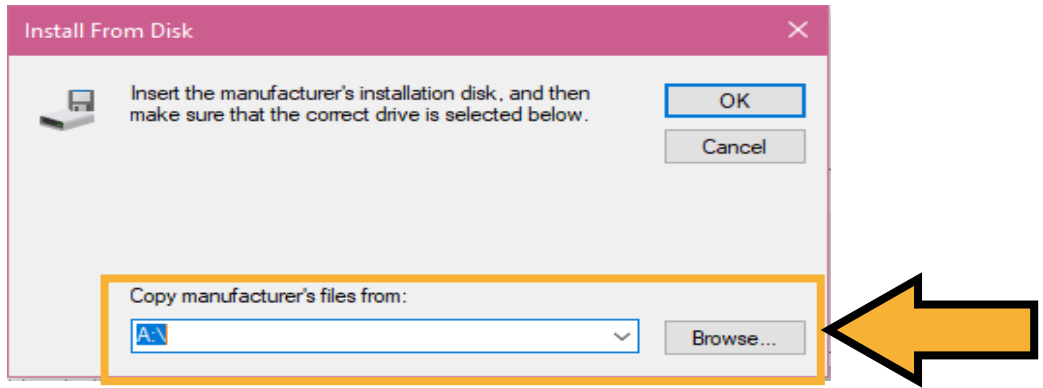
Step 5

Click **Have Disk**.



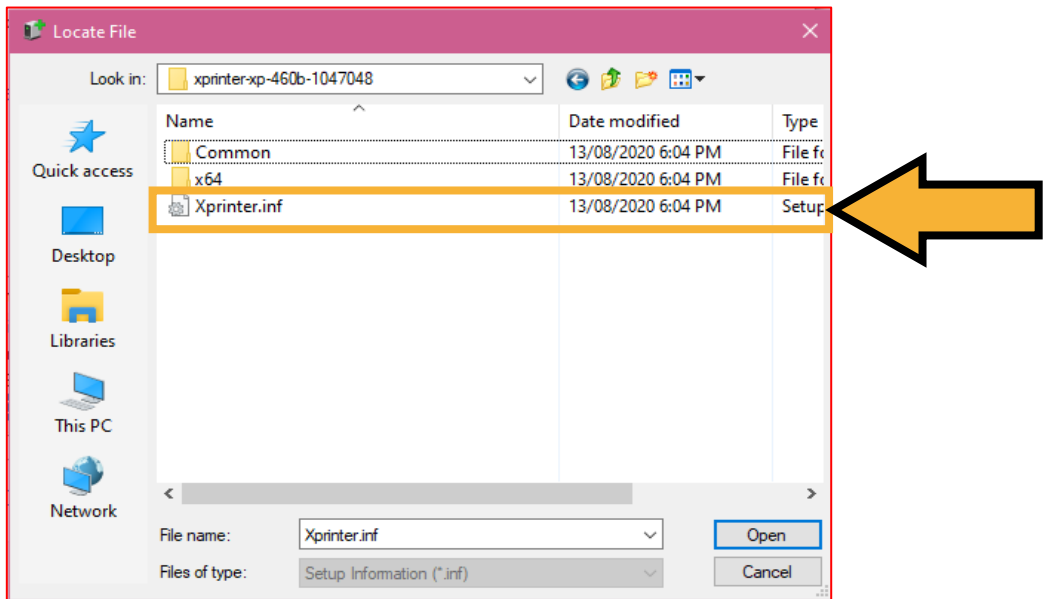
Step 6

Click **Browse** to select the files.

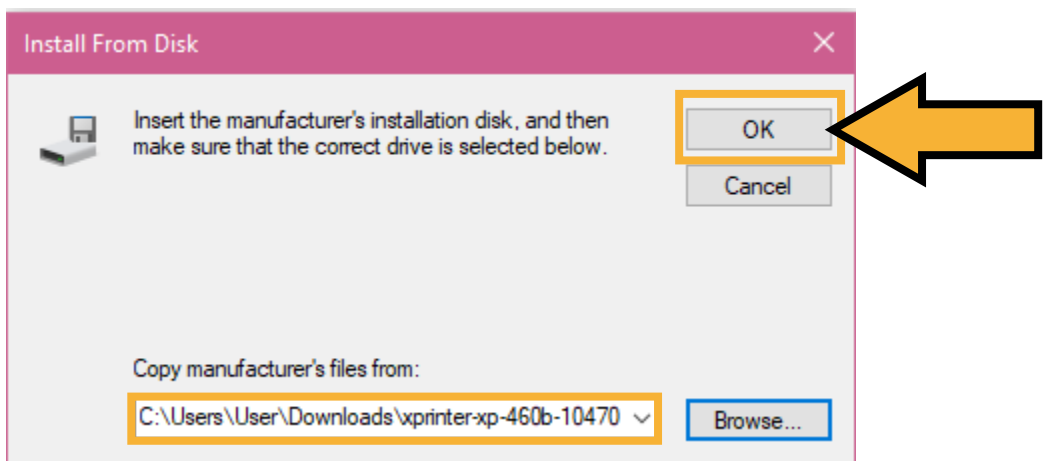


Step 7

Choose the file that already been extract earlier and click at the file as shown below. Then click **Open**.

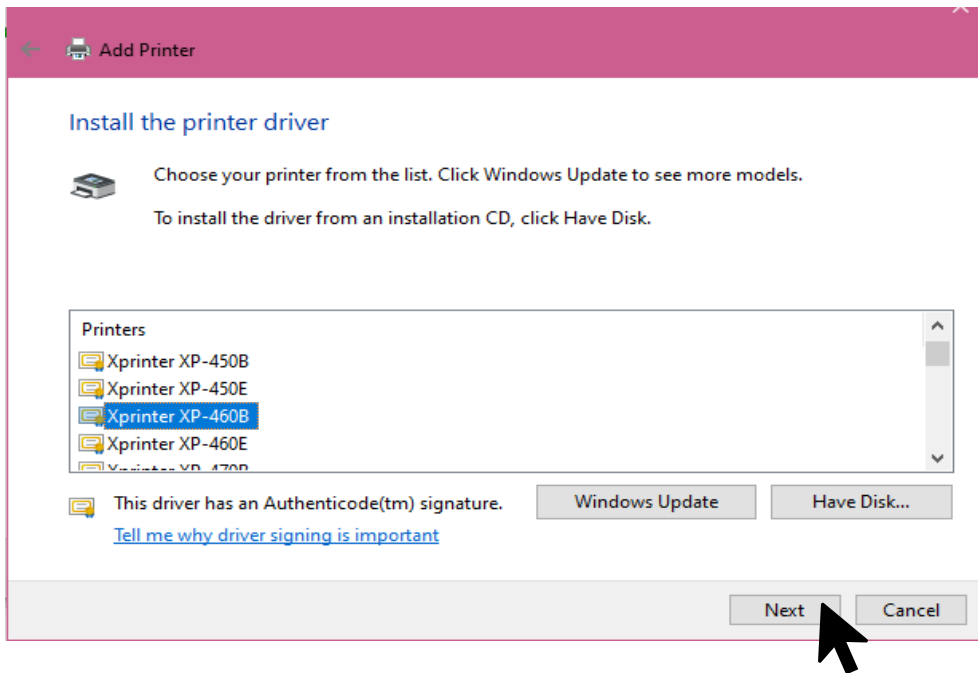


Once done, click **OK**.



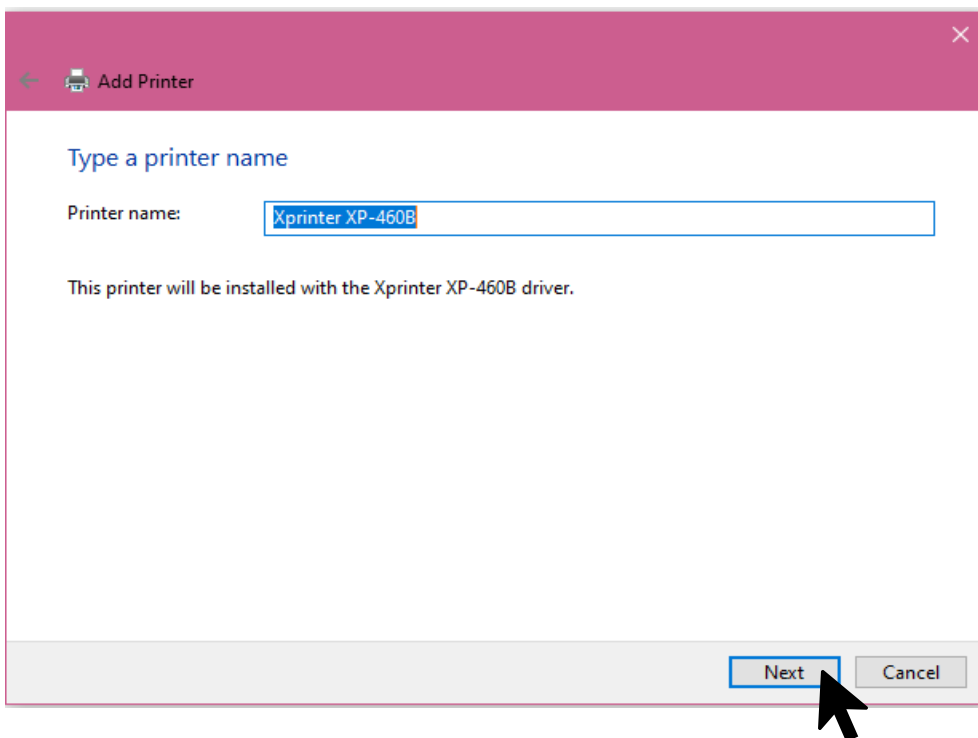
Step 8

Choose the Printer Model and click on the **Next** button.



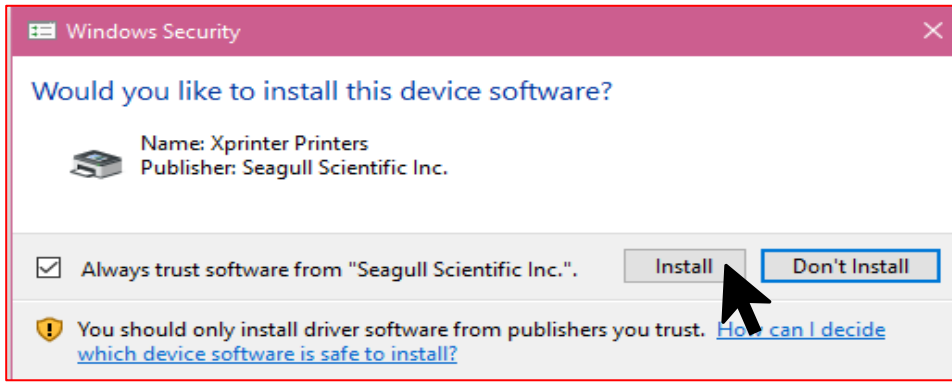
Step 9

Click on the **Next** button.



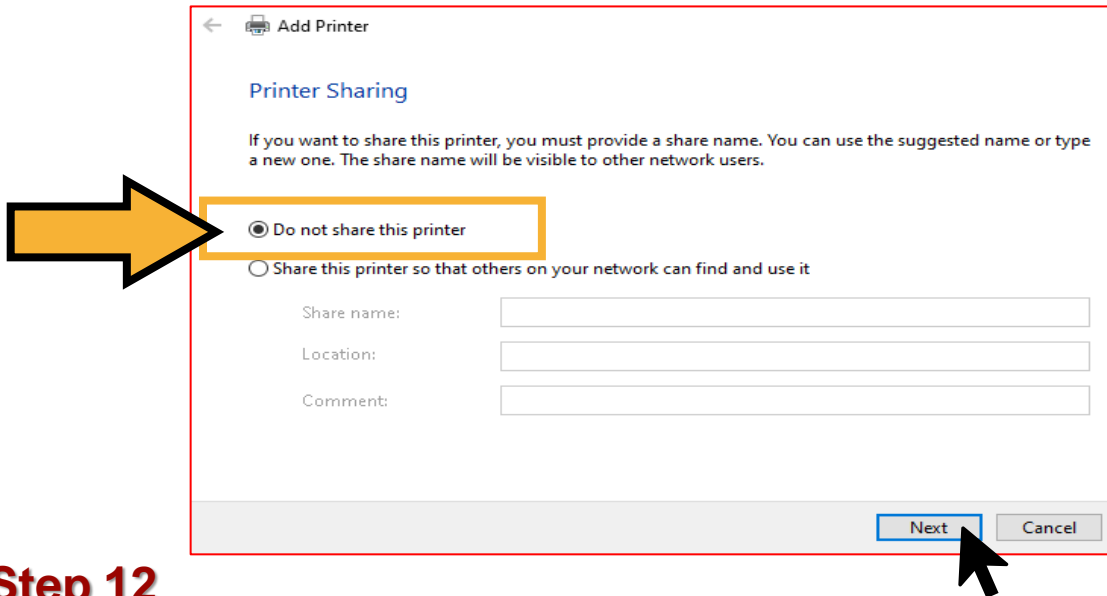
Step 10

Click on the **Install** button.



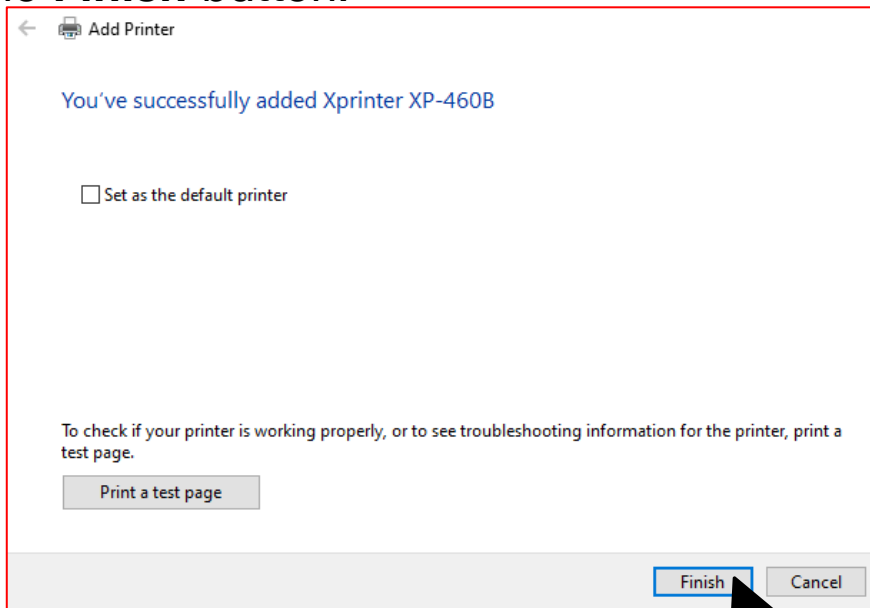
Step 11

Then, click '**Do not share this printer**' and click on the **Next** button.



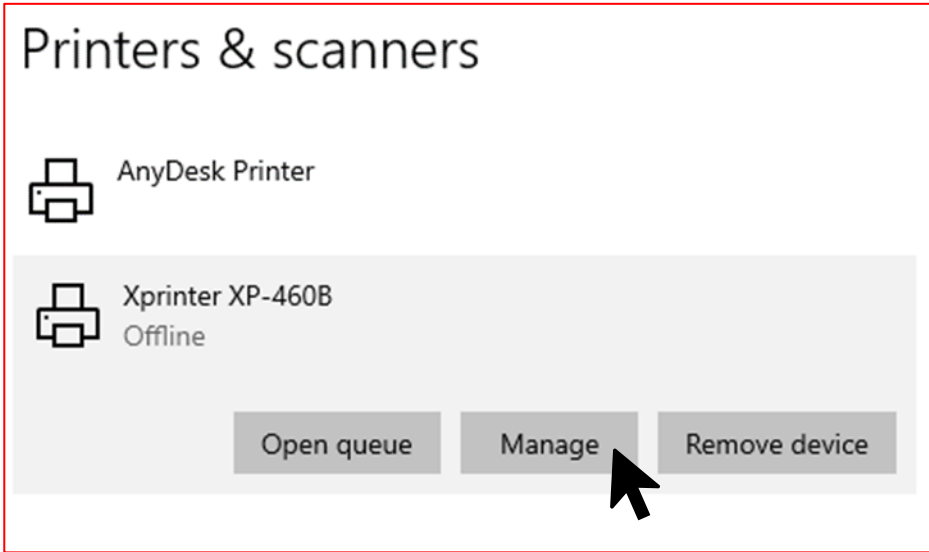
Step 12

Click on the **Finish** button.

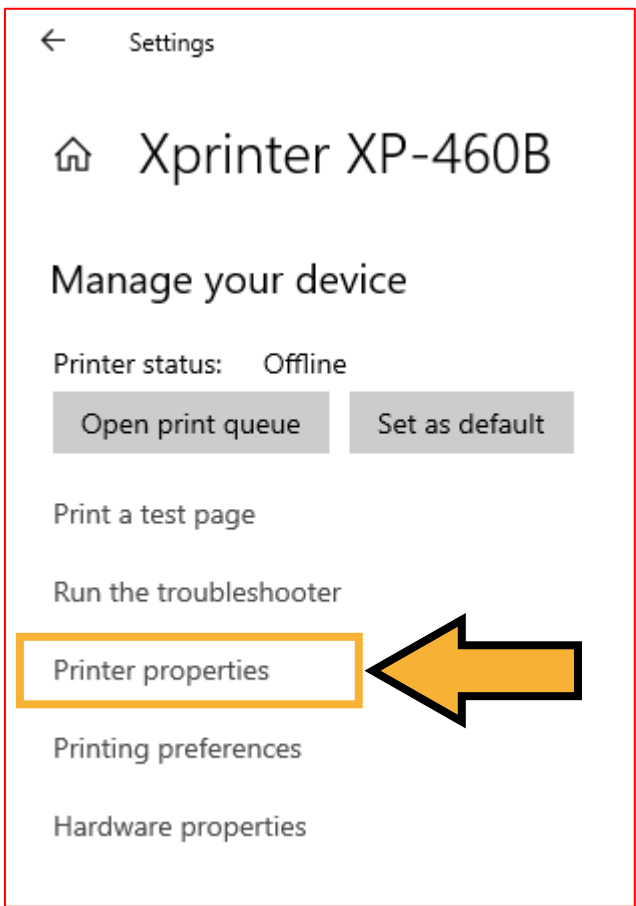


F) Size setting

Once the installation is completed, do the size setting for the new printer installed.

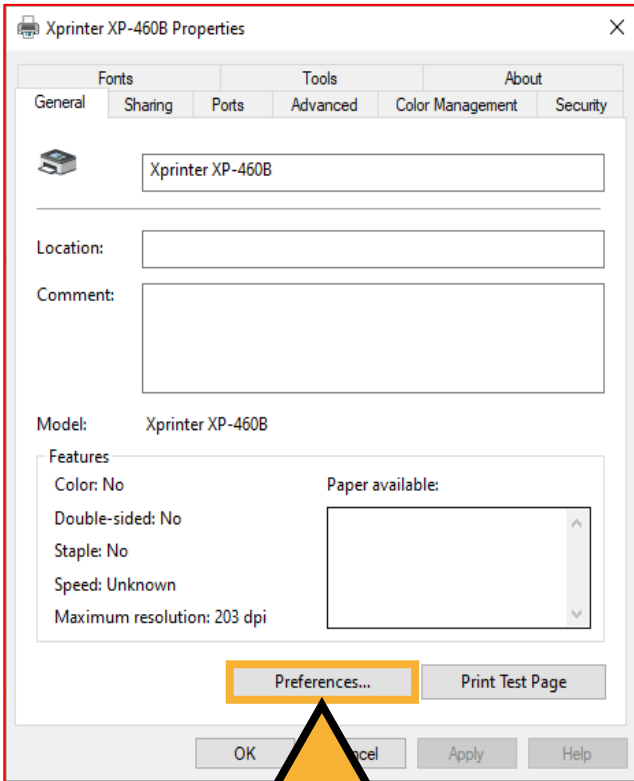


Step 1
At **Printer & Scanner Setting**, click on the **Manage** button.



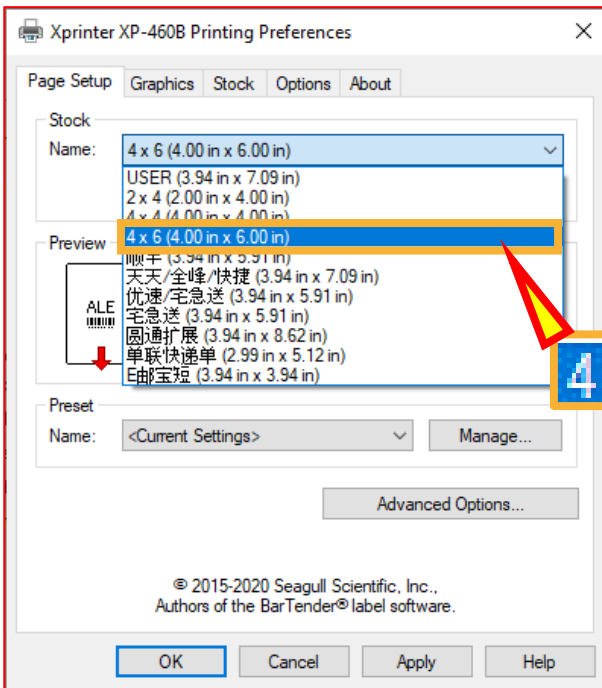
Step 2
Click **Printer Properties** to setup the sizing before print.

F) Size setting



Step 3

Click on the **Preferences** button to set the paper size.



Step 4

Under the Page Setup tab. Choose the sticker size which is '**4x6**' (4.00 in x 6.00 in). After choose, click **Apply** button and **OK** button.

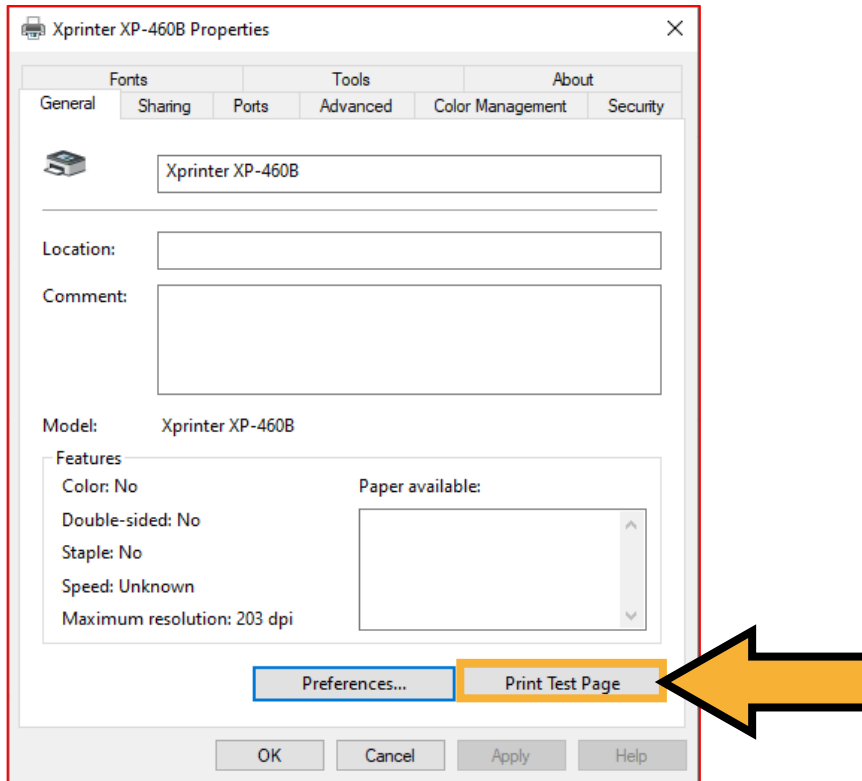
(2)

(1)

F) Size setting

Step 6

After done setup, you can click on the **Print test Page** to see whether it's work or not.



Now, the printer is ready to be used.

Step 7

Once done, you can start to print out all the eAWB.

The image shows a screenshot of the SKYNET eAWB printing interface. On the left is the eAWB form, and on the right is the print settings dialog. The print dialog has several settings: Destination (Xprinter XP-460B), Paper size (4 x 6), Pages per sheet (1), and Scale (Default). The 'Print' button is highlighted with a yellow box. Arrows (a), (b), and (c) point to the Destination, Paper size, and Print button respectively.

SENDER / PENGIRIM	
ACCOUNT: SZB0119200759	
Test Company2	
4 Jalan SS 13/5 Subang Jaya Selangor	
Contact: tan	Tel: 0356239074
Shipper Ref:	Dept:

RECEIVER / PENERIMA	
Angle Test	
ABC Trading Sdn Bhd	
14 Jalan Tandang Petaling Jaya Selangor	
Tel: 0123456798	Postcode: 47200

Contents:	Dim(cm):
trst	11.0x11.0x11.0

PIECES:	WT(kg):	Vol Wt:
1 Parcel	1.00	0.27

Date: 04/08/2020

Dest: **SZB**

- a) **Destination:**
Choose the correct printer **Xprinter XP-460B**.
- b) **Paper size:**
Choose 4 x 6
- c) Then, click on the **Print** button.

Thank You
